

Phospho-STAT1(S727) Antibody
Affinity Purified Rabbit Polyclonal Antibody (Pab)
Catalog # AP3256a**Specification**

Phospho-STAT1(S727) Antibody - Product Information

Application	WB, IHC-P,E
Primary Accession	P42224
Other Accession	Q764M5 , P42225
Reactivity	Human
Predicted	Mouse, Pig
Host	Rabbit
Clonality	Polyclonal
Isotype	Rabbit IgG
Calculated MW	87335

Phospho-STAT1(S727) Antibody - Additional Information**Gene ID** 6772**Other Names**

Signal transducer and activator of transcription 1-alpha/beta, Transcription factor ISGF-3 components p91/p84, STAT1

Target/Specificity

This STAT1 Antibody is generated from rabbits immunized with a KLH conjugated synthetic phosphopeptide corresponding to amino acid residues surrounding S727 of human STAT1.

Dilution

WB~~1:1000

IHC-P~~1:50~100

E~~Use at an assay dependent concentration.

Format

Purified polyclonal antibody supplied in PBS with 0.09% (W/V) sodium azide. This antibody is purified through a protein A column, followed by peptide affinity purification.

Storage

Maintain refrigerated at 2-8°C for up to 2 weeks. For long term storage store at -20°C in small aliquots to prevent freeze-thaw cycles.

Precautions

Phospho-STAT1(S727) Antibody is for research use only and not for use in diagnostic or therapeutic procedures.

Phospho-STAT1(S727) Antibody - Protein Information**Name** STAT1

Function Signal transducer and transcription activator that mediates cellular responses to interferons (IFNs), cytokine KITLG/SCF and other cytokines and other growth factors (PubMed:[12764129](#), PubMed:[12855578](#), PubMed:[15322115](#), PubMed:[23940278](#), PubMed:[34508746](#), PubMed:[35568036](#), PubMed:[9724754](#)). Following type I IFN (IFN-alpha and IFN-beta) binding to cell surface receptors, signaling via protein kinases leads to activation of Jak kinases (TYK2 and JAK1) and to tyrosine phosphorylation of STAT1 and STAT2. The phosphorylated STATs dimerize and associate with ISGF3G/IRF-9 to form a complex termed ISGF3 transcription factor, that enters the nucleus (PubMed:[28753426](#), PubMed:[35568036](#)). ISGF3 binds to the IFN stimulated response element (ISRE) to activate the transcription of IFN-stimulated genes (ISG), which drive the cell in an antiviral state (PubMed:[28753426](#), PubMed:[35568036](#)). In response to type II IFN (IFN-gamma), STAT1 is tyrosine- and serine-phosphorylated (PubMed:[26479788](#)). It then forms a homodimer termed IFN-gamma-activated factor (GAF), migrates into the nucleus and binds to the IFN gamma activated sequence (GAS) to drive the expression of the target genes, inducing a cellular antiviral state (PubMed:[8156998](#)). Becomes activated in response to KITLG/SCF and KIT signaling (PubMed:[15526160](#)). May mediate cellular responses to activated FGFR1, FGFR2, FGFR3 and FGFR4 (PubMed:[19088846](#)). Following bacterial lipopolysaccharide (LPS)-induced TLR4 endocytosis, phosphorylated at Thr-749 by IKBKB which promotes binding of STAT1 to the 5'-TTTGAGGC-3' sequence in the ARID5A promoter, resulting in transcriptional activation of ARID5A and subsequent ARID5A-mediated stabilization of IL6 (PubMed:[32209697](#)). Phosphorylation at Thr-749 also promotes binding of STAT1 to the 5'-TTTGAGTC-3' sequence in the IL12B promoter and activation of IL12B transcription (PubMed:[32209697](#)). Involved in food tolerance in small intestine: associates with the Gasdermin-D, p13 cleavage product (13 kDa GSDMD) and promotes transcription of CIITA, inducing type 1 regulatory T (Tr1) cells in upper small intestine (By similarity).

Cellular Location

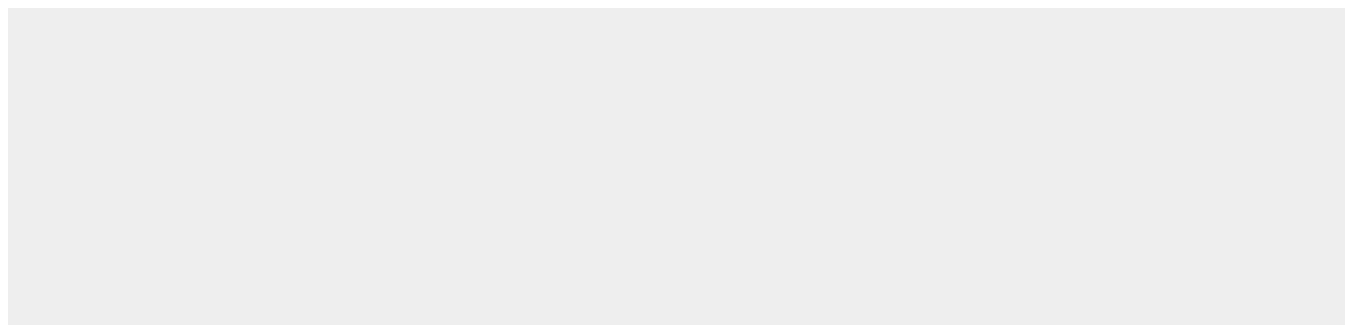
Cytoplasm. Nucleus Note=Translocated into the nucleus upon tyrosine phosphorylation and dimerization, in response to IFN-gamma and signaling by activated FGFR1, FGFR2, FGFR3 or FGFR4 (PubMed:[15322115](#)). Monomethylation at Lys- 525 is required for phosphorylation at Tyr-701 and translocation into the nucleus (PubMed:[28753426](#)). Translocates into the nucleus in response to interferon-beta stimulation (PubMed:[26479788](#))

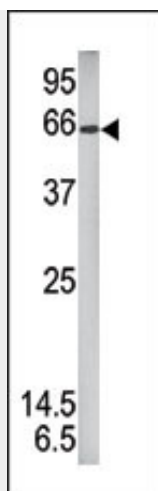
Phospho-STAT1(S727) Antibody - Protocols

Provided below are standard protocols that you may find useful for product applications.

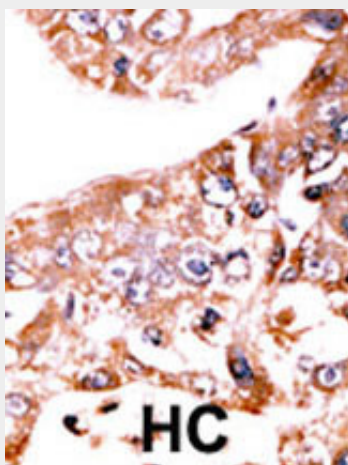
- [Western Blot](#)
- [Blocking Peptides](#)
- [Dot Blot](#)
- [Immunohistochemistry](#)
- [Immunofluorescence](#)
- [Immunoprecipitation](#)
- [Flow Cytometry](#)
- [Cell Culture](#)

Phospho-STAT1(S727) Antibody - Images





Western blot analysis of anti-Phospho-STAT1 Pab (Cat. #AP3256a) in mouse brain tissue lysate (35ug/lane). Phospho-STAT1 (arrow) was detected using the purified Pab.



Formalin-fixed and paraffin-embedded human cancer tissue reacted with the primary antibody, which was peroxidase-conjugated to the secondary antibody, followed by AEC staining. This data demonstrates the use of this antibody for immunohistochemistry; clinical relevance has not been evaluated. BC = breast carcinoma; HC = hepatocarcinoma.

Phospho-STAT1(S727) Antibody - Background

In response to cytokines and growth factors, STAT family members are phosphorylated by the receptor associated kinases, and then form homo- or heterodimers that translocate to the cell nucleus where they act as transcription activators. STAT1 can be activated by various ligands including interferon-alpha, interferon-gamma, EGF, PDGF and IL6. This protein mediates the expression of a variety of genes, which is thought to be important for cell viability in response to different cell stimuli and pathogens.

Phospho-STAT1(S727) Antibody - References

- Garcin, D., et al., J. Virol. 78(16):8799-8811 (2004).
- Melen, K., et al., J. Med. Virol. 73(4):536-547 (2004).
- Klampfer, L., et al., J. Biol. Chem. 279(29):30358-30368 (2004).
- Marg, A., et al., J. Cell Biol. 165(6):823-833 (2004).
- Chim, C.S., et al., Blood 103(12):4630-4635 (2004).

Phospho-STAT1(S727) Antibody - Citations

- [Role of gene in PRRSV infection of PAM cells](#)

